

CRANE BARGE

CMT 2

150MT FULL REVOLVING CRANE



- **TWO SECTION BOOM DESIGN**
- **150MT @ 9.6M (HALF BOOM SECTION)**
- **120MT @ 24M (FULL BOOM SECTION)**
- **26 PERSON ACCOMMODATION**

❖ GENERAL DATA

| | |
|-------------------|--------|
| ■ Ship Name: | CMT2 |
| ■ Classification: | CCS |
| ■ Flag: | Panama |
| ■ Year of Built: | 2006 |

❖ MAIN PARTICULARS

| | |
|------------------|--------------------|
| ■ Length O.A.: | 50 m |
| ■ Breadth: | 22 m |
| ■ Depth: | 4.2 m |
| ■ Gross Tonnage: | 1500 |
| ■ Net Tonnage: | 450 |
| ■ Working Draft: | 2.2 m |
| ■ Deck Load: | 5 t/m ² |



❖ MACHINERY

| | |
|---------------------------|--|
| ■ Main Genset: | 2 X 280kW |
| ■ Aux. Genset #1: | 1 X 45kW |
| ■ Deck Genset (Opt.): | 1 X 720kW |
| ■ Sewage Treatment Plant: | 3200L/day |
| ■ Air Compressor: | 35m ³ /h@3Mpa + 25 m ³ /h@3Mpa |

❖ ACCOMMODATION

- 26 bunks in 7 cabins:
 - 6 X 4M cabins
 - 1 X 2M cabins

Accommodation for total 26 persons, with mess rooms, galley, conference rooms etc.

❖ TANK CAPACITIES

| | |
|----------------------|--------------------|
| ■ Diesel Oil: | 277 m ³ |
| ■ Fresh/Drink Water: | 229 m ³ |

❖ LIFTING CAPACITY

| | |
|---------------------------|----------------|
| ■ Main Hoist – Half Boom: | |
| Max Capacity: | 150 mt |
| Radius: | 9.6 m ~ 24.3 m |
| Lifting Height: | 26.8 m |
| ■ Main Hoist – Full Boom: | |
| Max Capacity: | 120 mt |
| Radius: | 15.6 m ~45.0 m |
| Lifting Height: | 48.5 m |
| ■ Rigging Hook: | |
| Capacity: | 1 x 10 mt |

❖ DECK EQUIPMENT

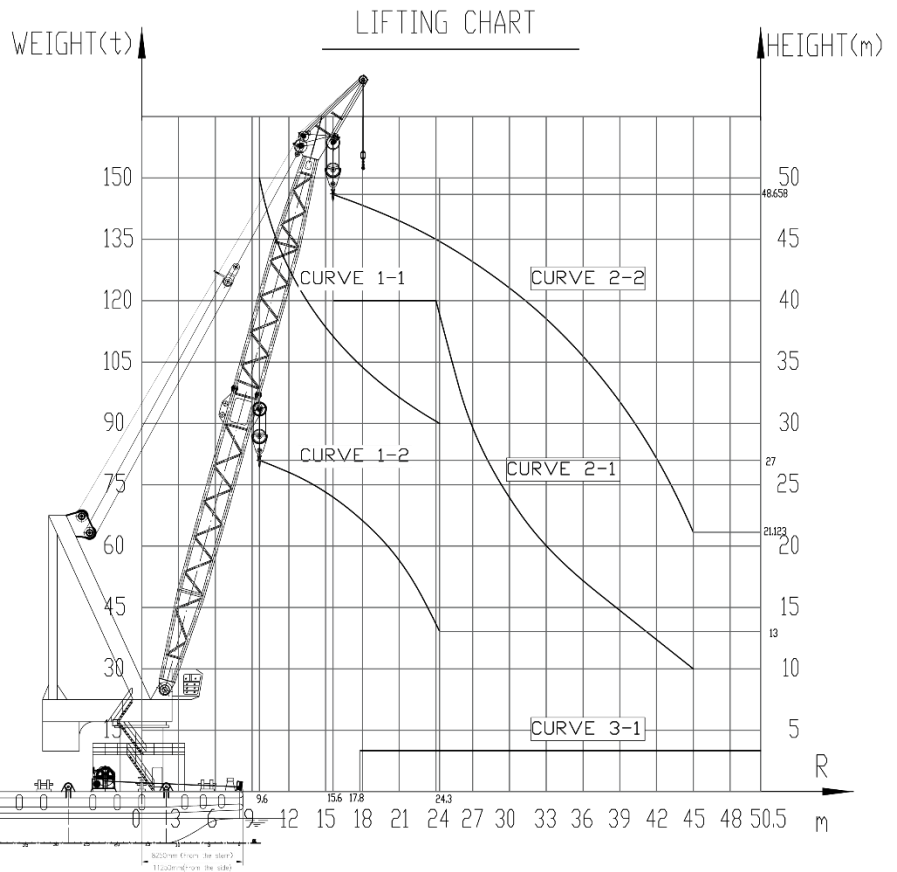
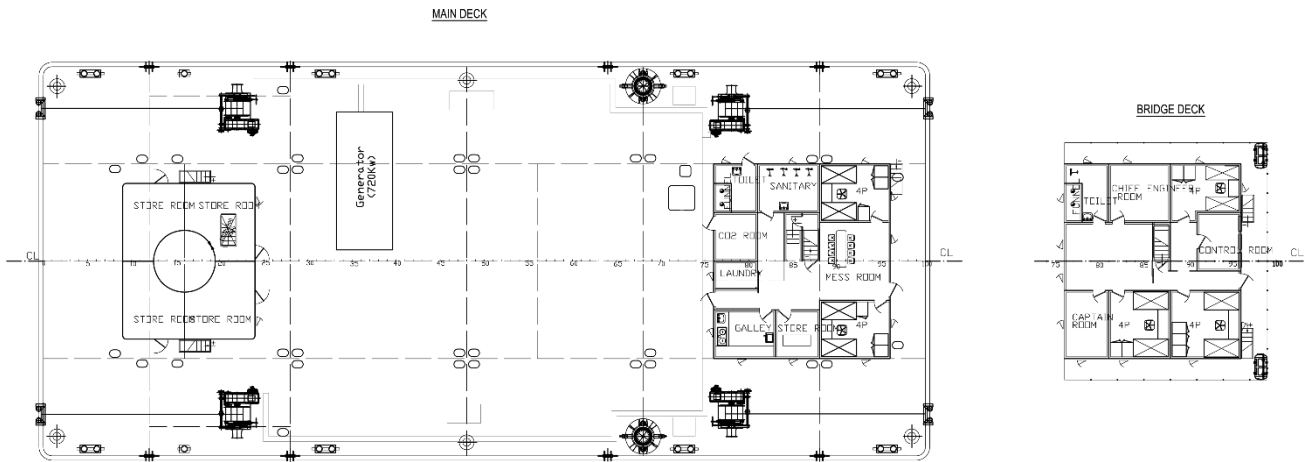
| | |
|---------------------------|----------------|
| ■ Position Mooring Winch: | |
| Rate Pull: | 4 sets X 300KN |
| Drum: | Φ 36mm X 500m |
| Anchor: | 4 sets X 3 mt |
| ■ Spud Piles (Opt.): | |
| Pile Dia: | Φ 760 mm |
| Sections: | 14.4 m + 4.8 m |

❖ NAVIGATION & COMMUNICATION

| | |
|----------------|---|
| ■ SART: | 1 |
| ■ Navtex: | 1 |
| ■ AIS: | 1 |
| ■ MF / HF: | 1 |
| ■ VHF DSC: | 1 |
| ■ Two-way VHF: | 3 |



GENERAL ARRANGEMENT & LIFTING CHART



HUAXICUN OFFSHORE ENGINEERING SERVICES CO., LTD.
 10 Tuanjie Road, Jingang Town,
 Zhangjiagang, Jiangsu,
 China
 Website: www.hxoes.com
 Email: hxoes@hxoes.com

All information in this document is proprietary of Jiangsu Huaxicun Offshore Engineering Services Co., Ltd.. The information contained herein is provided in good faith and for general information purposes only. Jiangsu Huaxicun Offshore Engineering Services Co., Ltd. reserves the right to amend the information without notice. **All Rights Reserved.**

