

ANCHOR HANDLING TUG

CMT 301 / CMT 302

2500BHP MULTI-PURPOSE AHT



- **2500BHP / 26MT BULLARD PULL**
- **SERVICE CRANE 10MT @ 18M**
- **FORE LIFTING HEAD + STERN SHARK JAW**
- **600KN ANCHOR / TOWING WINCH**



❖ GENERAL DATA

■ Ship Name:	CMT301 / CMT302
■ Classification:	CCS
■ Flag:	Panama
■ Year of Built:	2015

❖ MAIN PARTICULARS

■ Length O.A.:	33.3 m
■ Breadth:	10.6 m
■ Depth:	3.8 m
■ Gross Tonnage:	305
■ Net Tonnage:	91
■ Working Draft:	2.1 m
■ Deck Load:	4.5 t/m ²



❖ MACHINERY

■ Main Engine:	2 X 900kW
■ Aux. Genset #1:	1 X 100kW
■ Aux. Genset #2:	1 X 75kW
■ Bilge & Fire-Fighting Pump:	25.2 m ³ /h, head @ 40m
■ Portable Emergency Fire-Fighting Pump:	25 m ³ /h, head @ 30m, 4kw Engine

❖ ACCOMMODATION

- 10 bunks in 5 cabins:
 - 2 X 3M cabins
 - 1 X 2M cabin
 - 2 X 1M cabins

Accommodation for total 10 persons, with mess room and galley

❖ TANK CAPACITIES

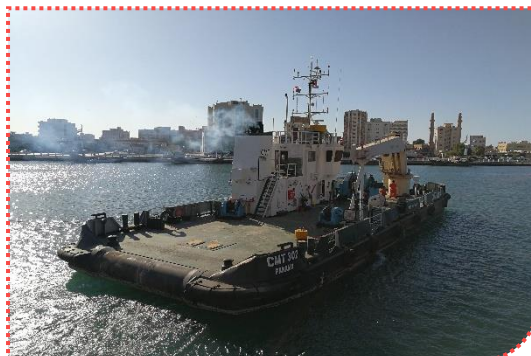
■ Diesel Oil:	38 m ³
■ Fresh/Drink Water:	55 m ³
■ Dirty Oil Tank:	4.2 m ³
■ Sewage Tank:	6.0 m ³
■ Bilge Tank:	6.0 m ³

❖ DECK EQUIPMENT

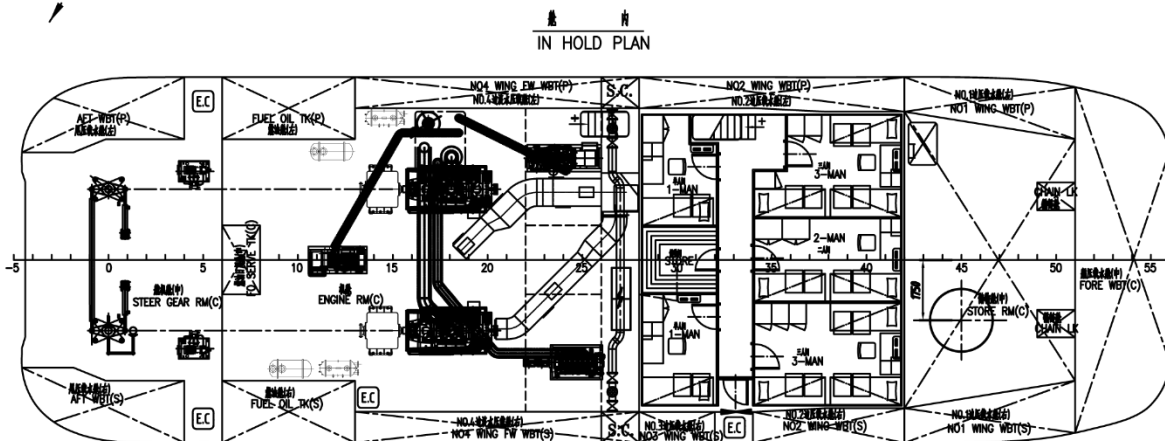
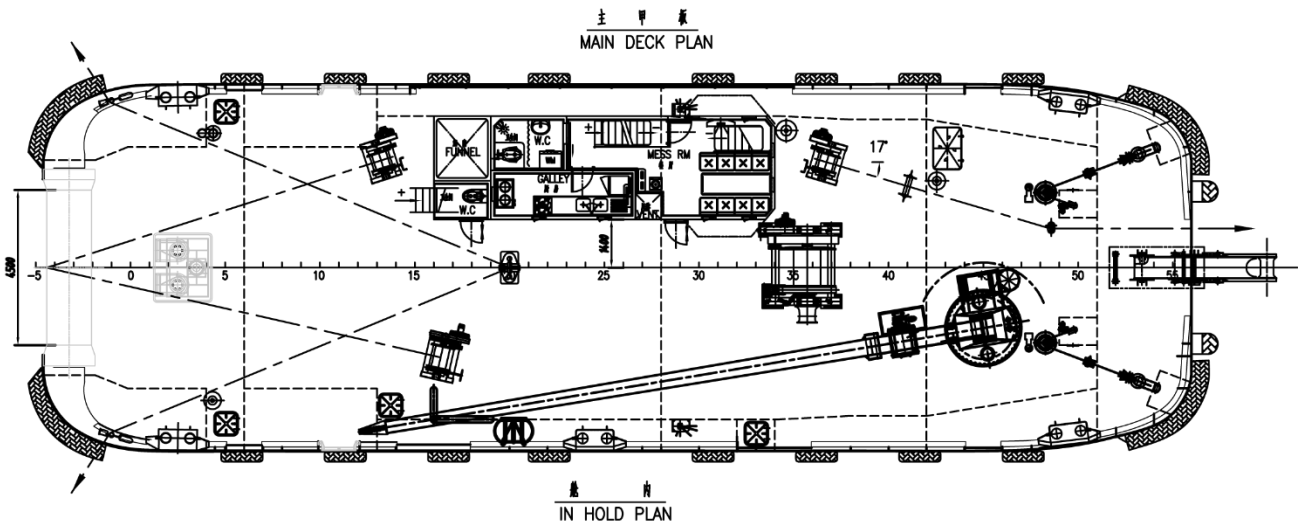
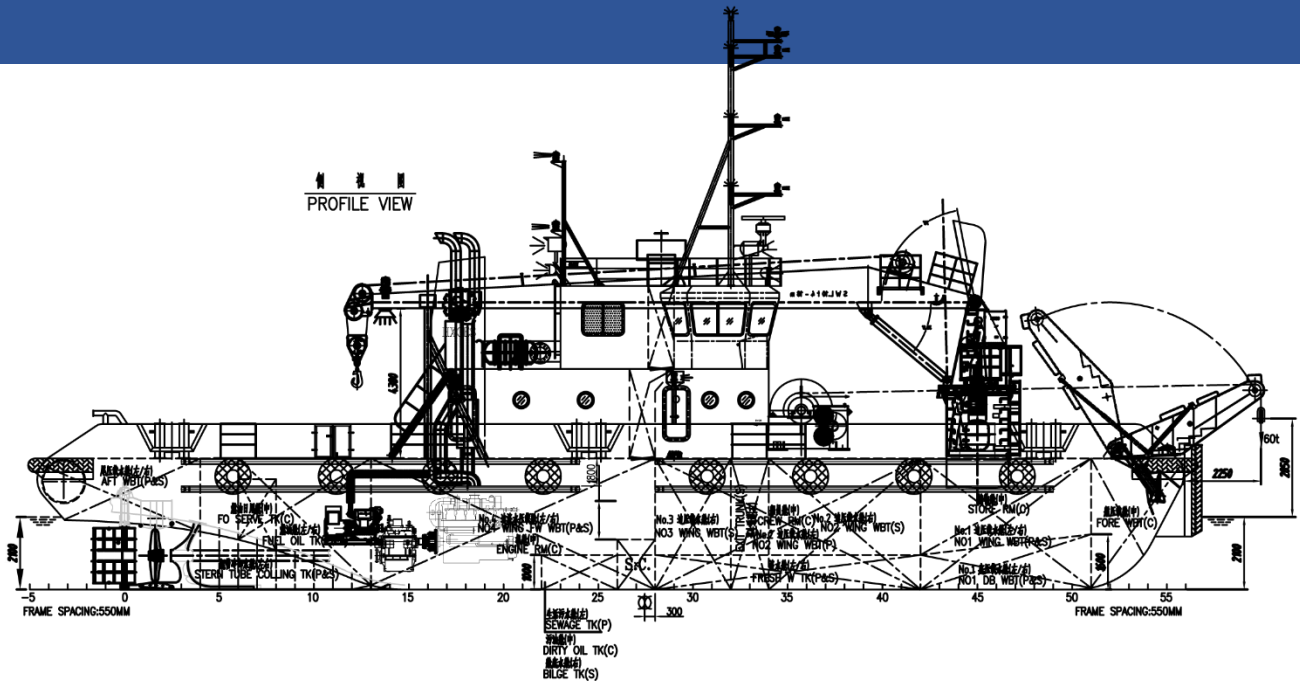
■ Anchor / Towing Winch:	
Rate Pull:	1 X 600KN
Drum:	Φ 48mm X 500m
■ Lifting Head:	SWL 60 mt
■ Shark Jaw & Pins:	SWL 60 mt
■ Service Crane:	10 mt @ 18m
■ Towing Padeye:	SWL 60 mt
■ Tugger Winch:	3 X 80 KN

❖ NAVIGATION & COMMUNICATION

■ Radar:	1
■ Magnetic Compass:	1
■ Electronic Chart:	1
■ DGPS:	1
■ SART:	1
■ Navtex:	1
■ AIS:	1
■ MF / HF / DSC:	1
■ VHF DSC:	1
■ Echo Sounder:	1



GENERAL ARRANGEMENT



HUAXICUN OFFSHORE ENGINEERING SERVICES CO., LTD.
 10 Tuanjie Road, Jingang Town,
 Zhangjiagang, Jiangsu,
 China
 Website: www.hxoes.com
 Email: hxoes@hxoes.com

All information in this document is proprietary of Jiangsu Huaxicun Offshore Engineering Services Co., Ltd.. The information contained herein is provided in good faith and for general information purposes only. Jiangsu Huaxicun Offshore Engineering Services Co., Ltd. reserves the right to amend the information without notice. **All Rights Reserved.**

