

DECK BARGE

SUN 1

250FT BARGE WITH 60MT CRANE



- **60MT LIEBHERR CRANE (OPTIONAL)**
- **4-POINT MOORING (OPTIONAL)**
- **20MT/M² DECK LOAD**



❖ GENERAL DATA

■ Ship Name:	SUN 1
■ Classification:	CCS
■ Flag:	Panama
■ Year of Built:	2015

❖ CRANE (Optional)

■ Main Hoist:	
Max Capacity:	60 mt
Radius:	6.9 m ~ 36.6 m
Lifting Height (to Deck):	35.8 m
■ Aux Block:	
Capacity:	15 mt @ 41.8m

❖ MAIN PARTICULARS

■ Length O.A.:	76.2 m
■ Breadth:	24.4 m
■ Depth:	5.5 m
■ Gross Tonnage:	2643
■ Net Tonnage:	792
■ Working Draft:	4.6 m
■ Deck Load:	20 t/m ²

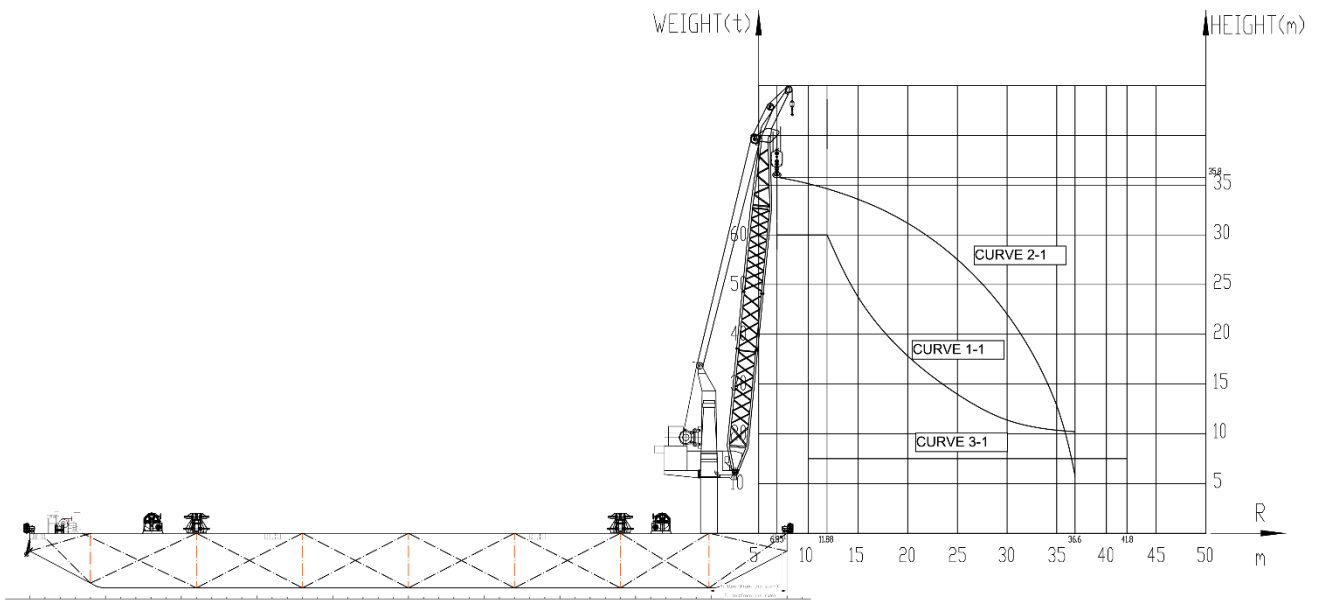
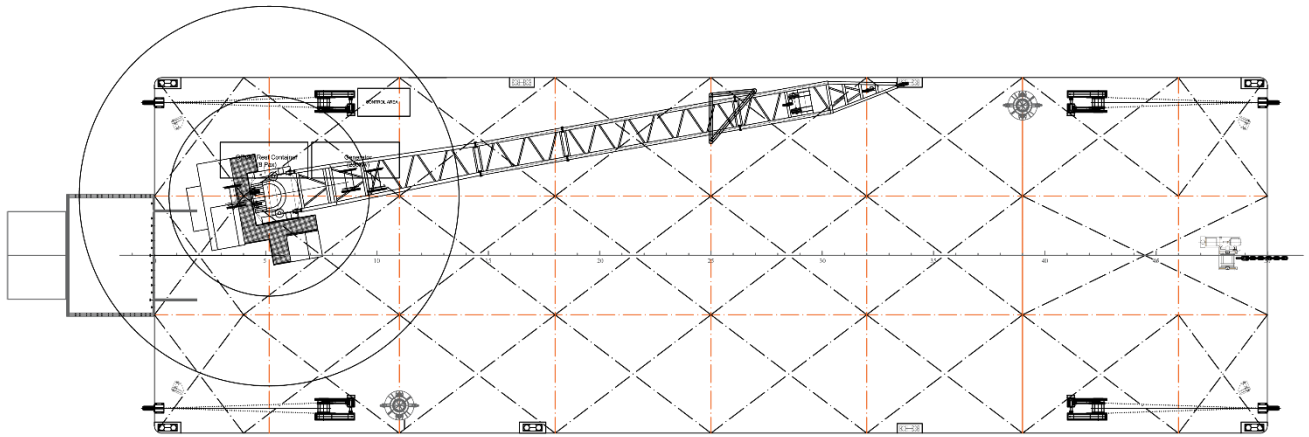
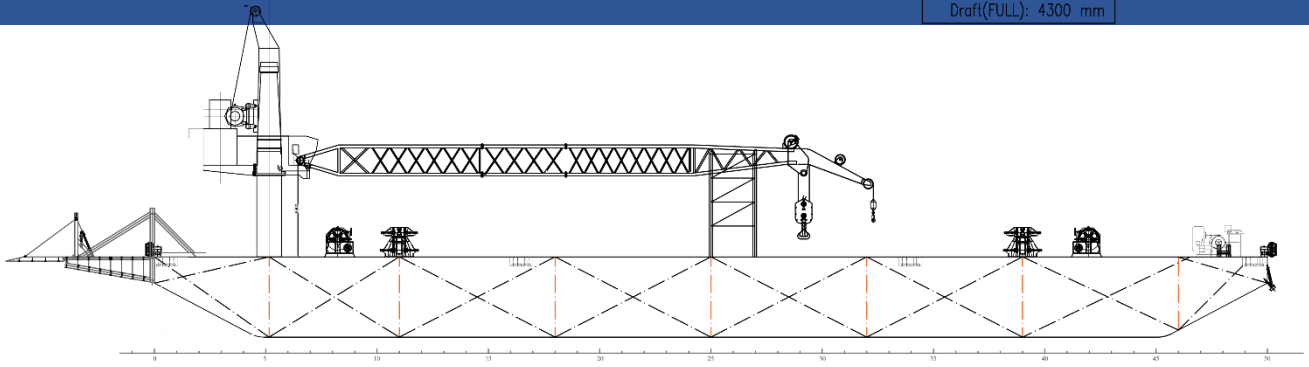


❖ MACHINERY (Optional)

■ Deck Genset:	1 X 300kW
■ Aux. Genset #1:	1 X 45kW
■ Position Mooring Winch:	
Rate Pull:	4 sets X 250KN
Drum:	Φ 36mm X 300m
Anchor:	4 sets X 3 mt
■ Spud Piles:	
Pile Dia:	Φ 760 mm
Sections:	14.4 m + 4.8 m
■ Diesel Windlass & Anchor:	1 X 3 mt

GENERAL ARRANGEMENT & LIFTING CHART

L: 76200 mm
 B: 24380 mm
 H: 5500 mm
 Draft(LIGHT): 1000 mm
 Draft(FULL): 4300 mm



HUAXICUN OFFSHORE ENGINEERING SERVICES CO., LTD.
 10 Tuanjie Road, Jingang Town,
 Zhangjiagang, Jiangsu,
 China
 Website: www.hxoes.com
 Email: hxoes@hxoes.com

All information in this document is proprietary of Jiangsu Huaxicun Offshore Engineering Services Co., Ltd.. The information contained herein is provided in good faith and for general information purposes only. Jiangsu Huaxicun Offshore Engineering Services Co., Ltd. reserves the right to amend the information without notice. **All Rights Reserved.**

